



Product Data Sheet

Electronic Latch Lock 3792 (5V) & 3793 (12V)



Product Information

5V and 12V high-quality electro-mechanical latch lock.

Features include:

- ✓ Door closed feedback
- ✓ Mechanical override key or optional spring-loaded door opener
- ✓ Rear socket for mechanical override cable
- ✓ Wide tolerance door bolt
- ✓ Excellent operation under back-pressure

3792 can be controlled via USB using our 3791 Distribution Board.

Looking for a complete system? We can supply an entire Connected Locking System including touchscreen interface, software and latches. Visit our website for more information www.connectedlocking.com

Designed and manufactured in the UK, 3792 (5V) and 3793 (12V) e-latches incorporate a range of innovative features. These include both key and mechanical cable overrides, a floating door bolt to accommodate mis-alignment, and a precision motor-driven mechanism with excellent operation even under load.

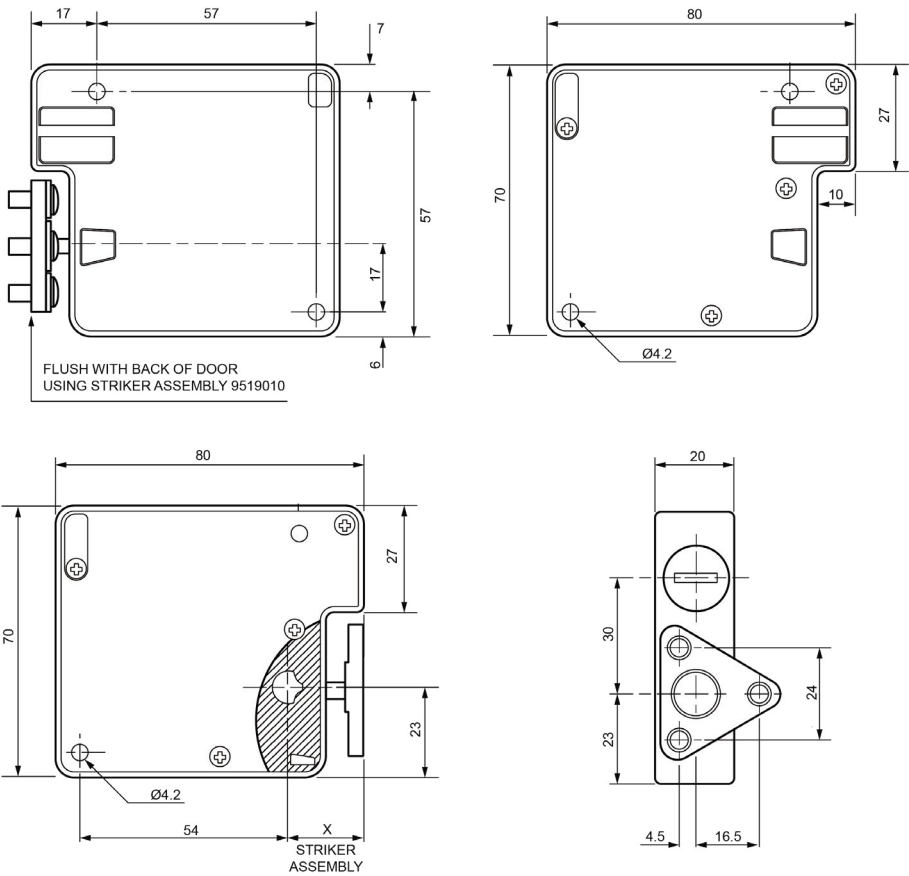
These latches have been designed for easy connection and control and include an internal sensor for feedback on whether the door is closed. They have a push-to-lock action and on opening will push the door slightly ajar. For greater movement a spring-loaded plunger is available as a replacement for the key override barrel.

Rigorously tested for durability and reliability, these latches are ideal for use on a wide variety of applications such as personal lockers, postal and delivery systems, asset management systems and other enclosures.

Technical Data

Interface:	JST – S6B – PH – SM4 - TB
Mechanical lifespan:	60,000 cycles
Dimensions:	70 x 80 x 20mm
Pull out force:	3000N
Maximum load for electronic opening:	150N at 5V and 12V
Housing material:	Zinc alloy
Weight:	350g
Operating temperature range:	-10 to + 50 °C
Standby current:	1.4mA
Maximum current draw:	300mA

Principal Dimensions



Striker Sub Assembly

Product code	"x" Dimension
9519010	20mm
9519011	22mm

Electrical Information

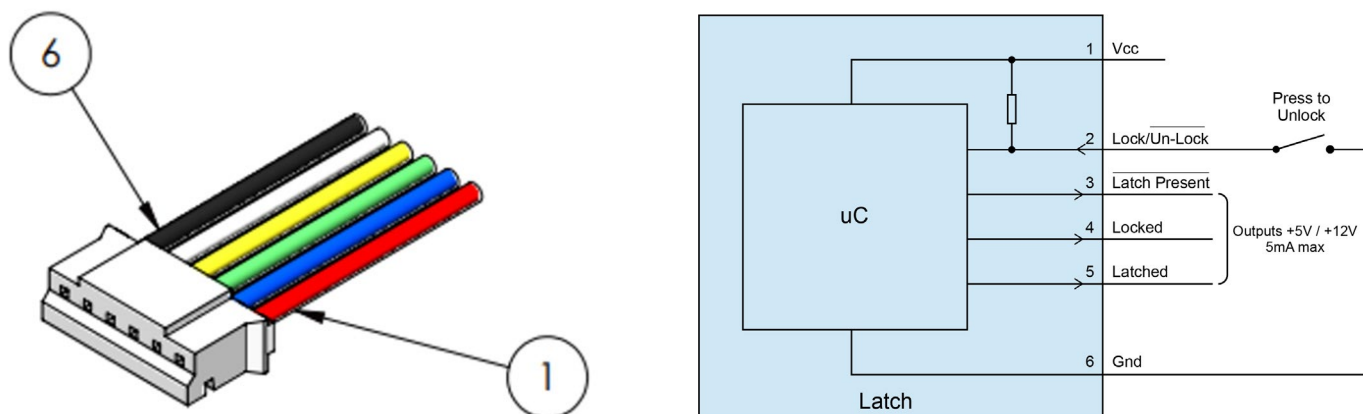
The latch input and outputs connect directly to an on-board microprocessor (uC). There is one input to specify lock/unlock (2). This is internally pulled up. When it is connected to VCC (1) or left unconnected the latch will be locked. The latch will unlock when lock/unlock (2) is pulled low (connected to ground) for longer than 10ms.

There are three outputs that indicate the status of the latch. The presence of a latch is indicated by a low signal on the latch present output (3).

The locked status (4) indicates whether the latch is in the locked position (high) or not (low). When this output is high the latch internally is in the locked state. If the door is still open, it will be locked shut when it is next closed.

The latched status (5) indicates whether the striker bolt is latched into the lock (high) or not (low). This identifies whether the door is shut and locked or not. If the latch is unlocked (see above), the latched indicator will always be low.

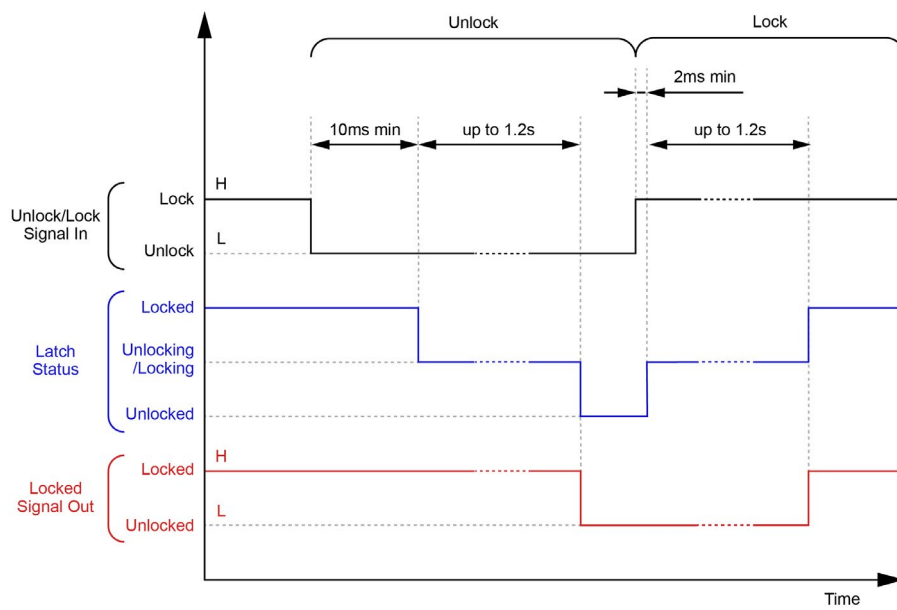
Connection Diagram



Male Connector

MPN	JST, PHR-6
Pin	Description
1	+5V or +12V
2	In - lock/unlock
3	Out - latch present (active low)
4	Out - locked (active high)
5	Out - latched (active high)
6	Ground

Timing Diagram



Accessories



37928K – 5V Latch (Silver Electrophoretic)
 37938K – 12V Latch (Silver Electrophoretic)
 *Optional colours available



9519010 – Striker assembly (flush fit)
 9519011 – Striker assembly (2mm stand-off)



9235435 - Plug (barrel replacement with anti-drill pins)



9519013 – 13mm Spring Loaded door plunger (replaces barrel override)



9560520 – 2 metre cable
 9560540 – 4 metre cable
 9560560 – 6 metre cable
 *other lengths available on request
 NOTE: All cables have male connectors both ends

We're here and ready to help

Our electronic locks are made in the UK and supported by our expert team in Europe and America, and through our partners worldwide.

Visit our website for more information: www.connectedlocking.com

Lowe & Fletcher Ltd (UK)

E: sales@lowe-and-fletcher.co.uk

T: +44 (0) 121 505 0400

W: www.lowe-and-fletcher.co.uk

Lowe & Fletcher Inc (USA)

E: sales@loweandfletcherinc.com

T: +1 (616) 994 0490

W: www.loweandfletcherinc.com

Euro-Locks SA NV (Belgium)

E: sales@euro-locks.be

T: +32 61 212.261

W: www.euro-locks.be

Euro-Locks SA (France)

E: euro-locks@euro-locks.fr

T: +33 (0)3.87.92.61.11

W: www.euro-locks.fr

Euro-Locks Sicherheitseinrichtungen GmbH (Germany)

E: vertrieb@euro-locks.de

T: +49 (0) 6897 9072 0

W: www.euro-locks.de

Euro-Locks Sp. z o. o. (Poland)

E: sekretariat@euro-locks.pl

T: +48 (32) 344-78-70, -82, -84

W: www.euro-locks.pl