



# Electronic Latch Locks

## Zodiac Data Sheet

The Lowe & Fletcher range of electronic latch locks incorporate a number of innovative features. These include both key and mechanical cable overrides, a floating door bolt to accommodate potential door mis-alignment, and a precision motor driven mechanism with powerful operation even under load.

These latches have been designed for easy connection and control and include an internal sensor for feedback on whether the door is closed. They have a push-to-lock action and on opening will push the door slightly ajar. For even greater door movement a spring-loaded plunger is available as a replacement for the key override barrel.

Available in 5V or IP-rated versions, the latches are supplied with a door mounted striker bolt and come with a 2, 4 or 6 metre cable.

Rigorously tested for durability and reliability, these latches are compatible with our Zodiac Smart Locking System and are ideal for use on a wide variety of smart lock applications such as personal lockers, postal and delivery systems, asset management systems and other enclosures.

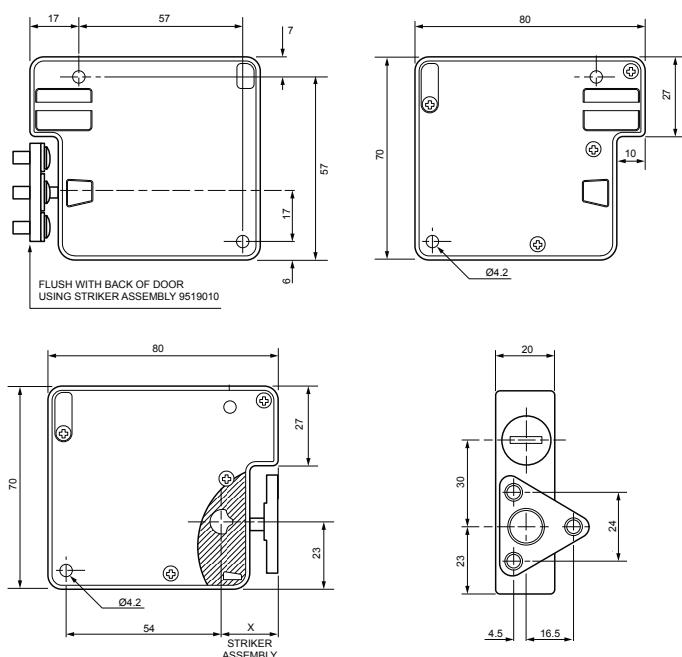


## Technical Data

|                                     | 3792 5V        | 3777 5V            |
|-------------------------------------|----------------|--------------------|
| Dimensions                          | 70 x 80 x 20mm | 70 x 120 x 20mm    |
| Pull out force                      | 3000N          | 2100N              |
| Maximum load for electronic opening | 150N at 5V     | 150N at 5V         |
| IP rating                           | IP22           | IP65               |
| Housing material                    | Zinc alloy     | Reinforced plastic |
| Weight                              | 350g           | 205g               |
| Operating temperature range         | -10 to + 50°C  | -10 to + 50°C      |
| Standby current                     | 1.4mA          | 1.4mA              |
| Maximum current draw                | 300mA          | 300mA              |

## Principle Dimensions

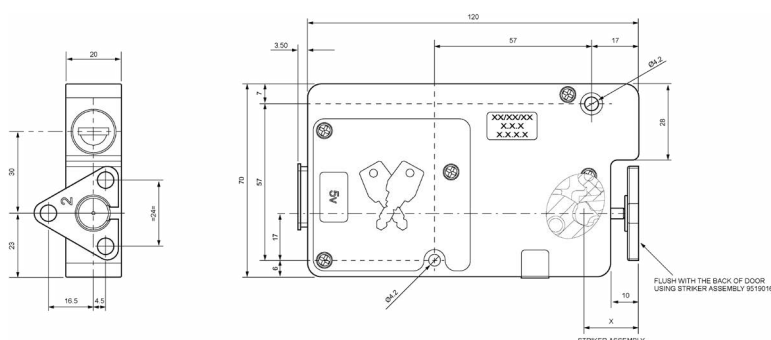
### Product ID: 3792



### Striker Sub Assembly

| Product Code | Product ID | "x" Dimension |
|--------------|------------|---------------|
| 9519010      | 3792       | 20mm          |
| 9519011      | 3792       | 22mm          |
| 9519016      | 3777       | 20mm          |
| 9519017      | 3777       | 22mm          |

### Product ID: 3777



Euro-Locks SA NV (Belgium)

**E:** sales@euro-locks.be

**T:** +32 61 212.261

**W:** www.euro-locks.com



Euro-Locks Sicherheitseinrichtungen GmbH (Germany)

Euro-Locks Sicherheitseinrichtungen GmbH (Germany)

**E:** vertrieb@euro-locks.de

**T:** +49 (0) 6897 9072 0

**W:** www.euro-locks.de

Euro-Locks Sp. z o. o. (Poland)

**E:** sekretariat@euro-locks.pl

**T:** +48 (32) 344-78-70, -82, -84

**W:** www.euro-locks.pl

Euro-Locks SA (France)

**E:** euro-locks@euro-locks.fr

**T:** +33 (0)3.87.92.61.11

**W:** www.euro-locks.fr

Lowe & Fletcher Ltd (UK)

**E:** sales@lowe-and-fletcher.co.uk

**T:** +44 (0) 121 505 0400

**W:** www.lowe-and-fletcher.co.uk

Lowe & Fletcher Inc (USA)

**E:** sales@loweandfletcherinc.com

**T:** +1 (616) 994 0490

**W:** www.loweandfletcherinc.com