



LOWE & FLETCHER

LOCKING SYSTEMS FOR INDUSTRY



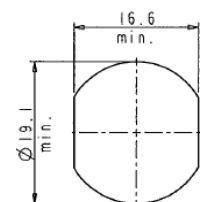
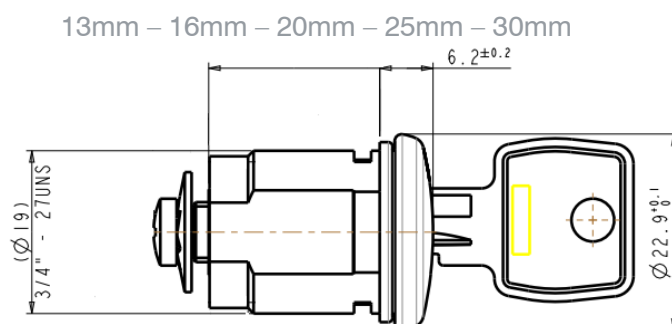
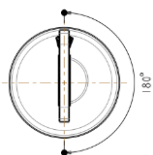
Designed to give a new up-to-date look to classic mechanical locks, the new **MAK₅** product range is giving a fresh impetus and a new dimension to the world of locks

With 5 different lengths, these locks can be used in many different applications and new design concepts.

MAK₅ is suitable for all applications where aesthetic appeal, reliability, security and smooth operation are required.

Main Features :

- 🔑 Head cover with dust shutter made in stainless steel .
- 🔑 Laser-marking option (your logo or company name or combinations can be marked on the cover on demand)
- 🔑 Numerous combinations available (E233, E324...)
- 🔑 Fitting hole diameter 19,1 x 16,6mm.
- 🔑 Master key system available on demand



MAK₅

DESIGN LOCK

MAK5		Lock with customizable and fashionable stainless steel cap	
Body Lengths			
13	13MM		
16	16MM		
20	20MM		
25	25MM		
30	30MM		
Piercing			
K	Diameter 19,1 x 16,6mm		
Shutter			
S	Stainless Steel Shutter		
Variant			
00	Digits for variant		
Key Rotation			
01	90° Clockwise – 1 key exit at 12 O/C		
02	90° Anti Clockwise – 1 key exit at 12 O/C		
08	90° Clockwise – 2 key exit at 12 & 3 O/C		
09	90° Anti Clockwise – 2 key exit at 12 & 9 O/C		
03	180° Clockwise – 2 key exit at 12 & 6 O/C		
Finish			
7B	Body in Bright Nickel - head in stainless steel		
Lock Fixing			
N	Nut Fixing		
H	Horseshoe clip (please specify panel thickness)		
Master			
0	No masterkey system		
5	Masterkey system		

EXAMPLE

MAK5	13	K	S	00	03	7B	N	0
------	----	---	---	----	----	----	---	---

Lock with 13mm under the head - fixing hole size diameter 19,1 x 16,6mm – 180° Movement Clockwise 2 key exits - nickel finish - Nut fixing — Without Master

To be specified: Key alike or key to differ – Cam W2XXXXX



Lowe & Fletcher Inc.
650 Airport Place
Norton Shores MI-49441

T: +1 (616) 994 0490
F: +1 (616) 994 0480
E: sales@loweandfletcherinc.com
W: www.loweandfletcherinc.com

MAK5
DESIGN LOCK

L&F A Lowe & Fletcher Group Company