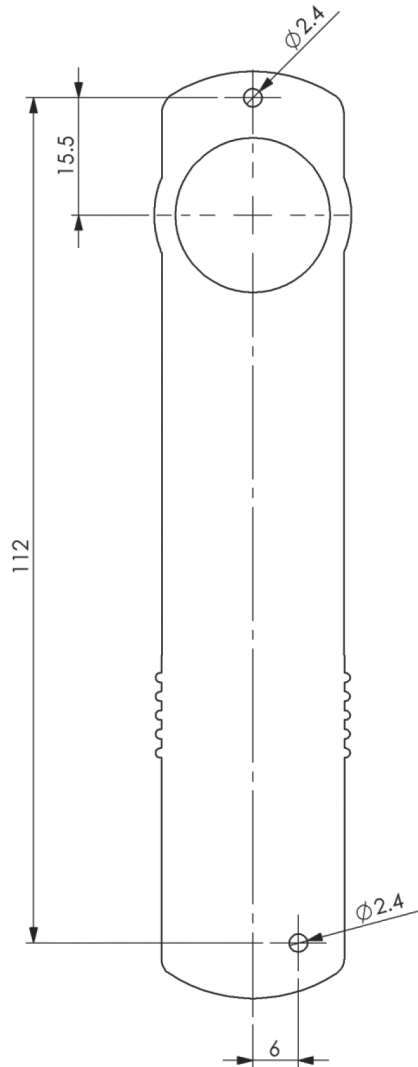


## Installation Template



IF USING A PRINTED TEMPLATE,  
PLEASE CHECK THIS DIMENSION IS CORRECT

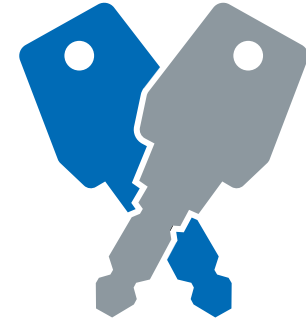
### SPECIAL NOTES

Before installing the Digital Combination Lock, insert the battery and familiarise yourself with the operation and programming.

Unless manufactured to special order, the lock is supplied in the "Private" operating mode. In this mode, the user must enter a four-digit User Code to open it. The unit will re-lock itself after four seconds. The lock can also be opened with the eight-digit Master Code.

Unless manufactured to special order, the default **Master Code** is **11 33 55 77** and the default **User Code** is **22 44**

Call Here



## INSTALLATION INSTRUCTIONS

### 3760 Digital Combination Lock

Lowe & Fletcher Inc  
650 Airport Place Norton  
Shores MI-49441

T: +1 (616) 994 0490  
F: +1 (616) 994 0480  
E: [sales@loweandfletcherinc.com](mailto:sales@loweandfletcherinc.com)  
W: [www.loweandfletcherinc.com](http://www.loweandfletcherinc.com)

**L&F** A Lowe & Fletcher Group Company

3760 Installation Instructions – 9224218 V1 Jul 2016

[loweandfletcherinc.com](http://loweandfletcherinc.com)

## INSTALLATION INSTRUCTIONS

# 3760 Digital Combination Lock

### ENSURE BATTERIES ARE FITTED BEFORE INSTALLING

The 3760 Digital Combination Lock is designed as a quick and simple upgrade to existing keyed locks typically used on wooden and metal office furniture. The basic principle is that the existing lock cylinder is removed with a suitable remover key and the new electronic lock is inserted and secured to the panel. The lock will work with many removable cylinder products but it is important to check exact requirements before fitting.

**Step 1** Before installing the Digital Combination Lock, familiarise yourself with the operation and programming. (See Programming Guide to set your own codes.)

**Step 2** Ensure existing mechanical lock is in the unlocked position. Using a Master/Remover key, remove the cylinder from the lock housing and keep it for future use.

**Step 3** Insert the drive adapter into the existing lock housing, ensuring that the drives engage.

**Step 4** Using the template mark the two fixing holes. Drill holes using a 2.4mm drill. **Ensure that any template is printed to the correct size as copies can often be distorted.**

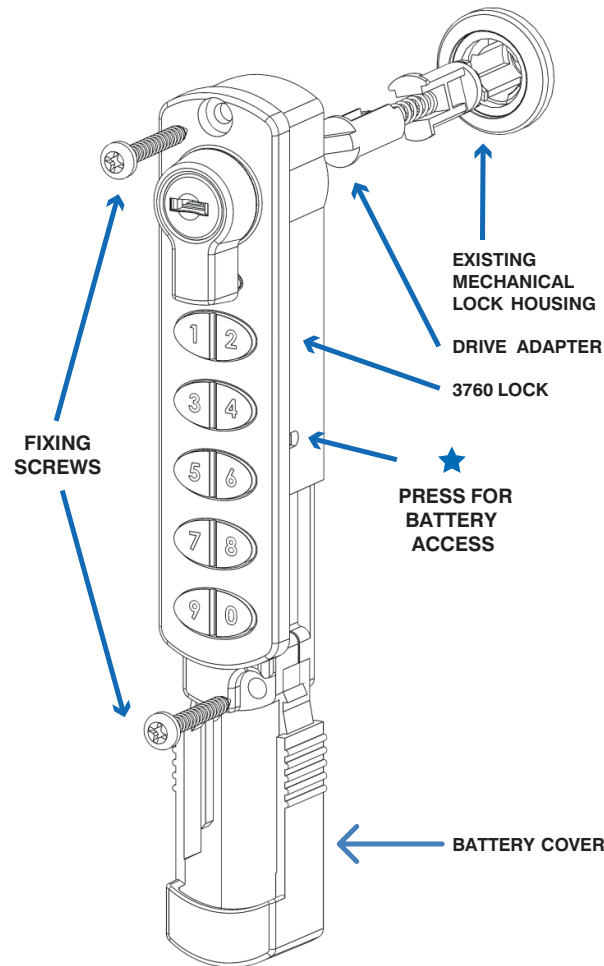
**Step 5** Rotate the handle of the digital lock to the open position and join it with the drive adapter in the mechanical lock. Secure lock using two fixing screws provided, ensuring drive piece and handle align correctly. Ensure that a fixing torque is used which is appropriate for the panel to which the lock is fixed. Do not exceed 1Nm.

**Step 6** Insert an AAA battery with the negative terminal towards the handle. Fit the battery cover.

**Step 7** With the door / drawer open, check the operation of the lock using the factory User Code 22 44 or your new code.

**Step 8** If the lock is functioning correctly, **CHANGE THE DEFAULT MASTER CODE 11 33 55 77** and **DEFAULT USER CODE 22 44** and program the lock using the programming and operating instructions supplied.

**IMPORTANT** – All Lowe & Fletcher Digital Locks are manufactured with a common Master Code and User Code. For security reasons this must be changed prior to use. Refer to the programming instructions and keep a safe record of your new Master Code as the lock cannot be re-programmed without it. Your lock is not secure until you have changed the default Master and User Codes.



BATTERY COVER IS REMOVED BY INSERTING A PAPER CLIP OR SIMILAR INTO THE HOLE MARKED ★ AND SLIDING COVER AS SHOWN